

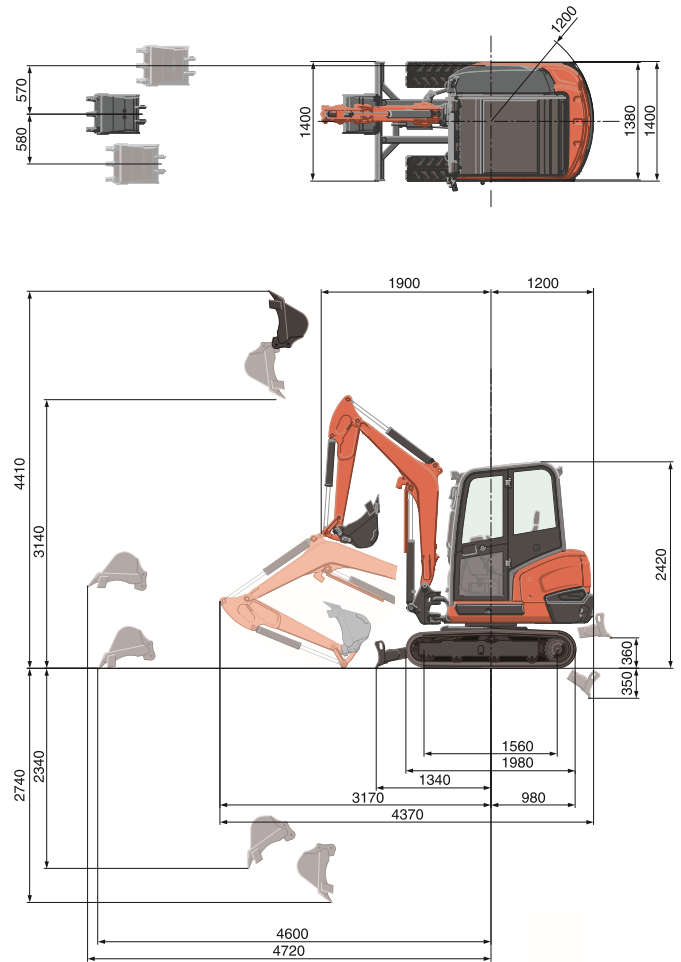
# SPECIFICATIONS

Model		KX027-4		
Machine weight*1	Cabin / Canopy	kg	2590 / 2520	
Operating weight*2	Cabin / Canopy	kg	2665 / 2595	
Engine	Model		V1505-E4	
	Type		Water-cooled, diesel engine E-TVCS (Economic, ecological type)	
	Output ISO9249 NET	PS/rpm	24.4 / 2250	
		kW/rpm	17.5 / 2250	
	Number of cylinders		4	
	Bore x Stroke		mm	78 x 78.4
Displacement		cc	1498	
Dimensions	Overall width		mm	1400
	Overall height (Cabin / Canopy)		mm	2420 / 2420
	Overall length (1300mm arm)		mm	4340 / 4370
	Ground clearance		mm	300
	Dozer size (width x height)		mm	1400 x 300
	Rubber shoe width		mm	300
	Minimum front swivel radius with boom swing (left / right)		mm	1580 / 1850
	Boom swing angle (left / right)		deg	77 / 57
Hydraulic System	P1, P2	P1, P2	Variable displacement pump	
		Flow rate ℓ/min	29.3 x 2	
		Hydraulic pressure MPa (kgf/cm <sup>2</sup> )	22.5 (230)	
	P3	P3	Gear type	
		Flow rate ℓ/min	18.0	
		Hydraulic pressure MPa (kgf/cm <sup>2</sup> )	17.2 (175)	
	Auxiliary (AUX1)	Flow rate ℓ/min	47.3	
		Hydraulic pressure MPa (kgf/cm <sup>2</sup> )	22.5 (230)	
	Auxiliary (AUX2)	Flow rate ℓ/min	18.0	
		Hydraulic pressure MPa (kgf/cm <sup>2</sup> )	17.2 (175)	
Max. digging force, arm		kN (kgf)	12.9 (1320)	
Max. digging force, bucket		kN (kgf)	22.1 (2250)	
Hydraulic reservoir (tank / full)		ℓ	34 / 51	
Max. travelling Speed	Low	km/h	2.7	
	High	km/h	4.6	
Ground contact pressure	Cabin	kPa (kgf/cm <sup>2</sup> )	24.7 (0.25)	
	Canopy	kPa (kgf/cm <sup>2</sup> )	23.7 (0.24)	
Swivelling speed		rpm	9.8	
Fuel tank capacity		ℓ	48	

\*1 With 55kg standard bucket, 1300mm arm, full tanks, rubber shoe.

\*2 With 75kg operator, 1300mm arm, 55kg standard bucket, full tanks, rubber shoe.

# WORKING RANGE



1300 mm arm  
Unit: mm

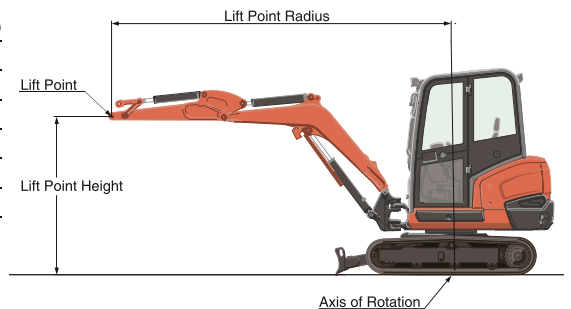
# LIFTING CAPACITY

Cabin, rubber version

Lift Point Height	Lifting point radius (2m)		Lifting point radius (max.)	
	Over-front (blade down)	Over-side	Over-front (blade down)	Over-side
1.5m	9.2 (0.94)	7.5 (0.77)	-	-
1.0m	12.3 (1.26)	7.0 (0.71)	5.0 (0.51)	2.6 (0.26)
0.5m	13.9 (1.42)	6.7 (0.68)	-	-
0m	14.1 (1.44)	6.6 (0.67)	-	-

\*The lifting capacities are based on ISO 10567 and do not exceed 75% of the static tilt load of the machine or 87% of the hydraulic lifting capacities of the machine.

\*\*The excavator bucket, hook, sling and other lifting accessories are not included on this table.



\* Working ranges are with Kubota standard bucket, without quick coupler.  
\* Specifications are subject to change without notice for purpose of improvement.

★ All images shown are for brochure purposes only.

When operating the excavator, wear clothing and equipment in accordance to local legal and safety regulations.

## KUBOTA EUROPE S.A.S.

19 à 25, rue Jules Verceyrysse  
Zone Industrielle - B.P. 50088  
95101 Argenteuil Cedex France  
Téléphone : (33) 01 34 26 34 34  
Télécopieur : (33) 01 34 26 34 99

## KUBOTA (U.K.) LTD

Dormer Road, Thame, Oxfordshire,  
OX9 3UN, U.K.  
Phone : 01844-268140  
F a x : 01844-216685

## KUBOTA Baumaschinen GmbH

Steinhauser Straße 100  
D-66482 Zweibrücken Germany  
Telefon : (49) 0 63 32 - 487 - 312  
F a x : (49) 0 63 32 - 487 - 101

<http://www.kubota-eu.com>

Cat. No.8928-01-EU '17-01D.